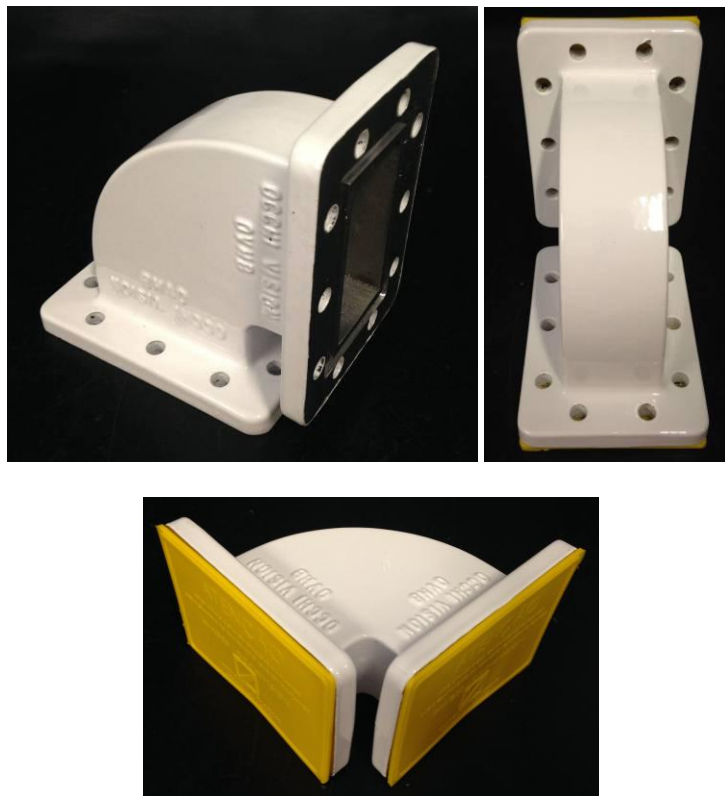


## *Professional C-Band 90 Degree H-Hard Bend with CPR 229 Flanges – Model OVHB*

Produced in Brazil, the Curve 90° in waveguide Plan H, model OVHB, was designed for the applications where it is necessary to redirect the LNB or Filter in the feeder, for example, in the radial port of the feeders, with high efficiency and practicality.



The assembly in the feeder is simple and the product has the kit of bolts, nuts, washers in stainless steel and gasket. Also, it has plastic flange protectors.

<b>Model</b>	<b>OVHB</b>
<b>Frequency Range</b>	<b>3.3 – 4.9 GHz</b>
<b>Flanges Input / Output</b>	<b>CPR 229G</b>
<b>VSWR</b>	<b>1.15</b>
<b>Insertion Loss</b>	<b>0,05 dB</b>
<b>Material:</b>	<b>Die-cast aluminum with precision machining</b>
<b>Finishing:</b>	<b>Epoxy paint in white color</b>
<b>Operating Temperature:</b>	<b>-40°C to +60°C</b>
<b>Weight</b>	<b>400 g</b>
<b>Accessories</b>	<b>Screws, nuts and washers in stainless steel, gasket, plastic flange protection caps.</b>
<b>NCM</b>	<b>8529.10.90</b>

*Note: Specifications subject to change without notice.  
Made in Brazil*