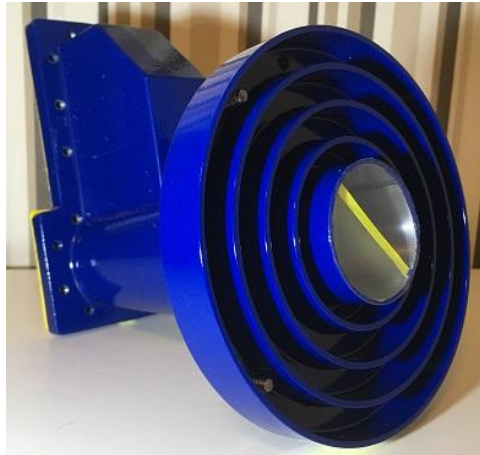


Axial feeder Appendix 30B Circular Dual



Produced in Brazil, the Axial Feeder dual circular model **Apêndice B**[®] was designed to efficiently and conveniently receive Appendix 30B band (4.5 to 4.8 GHz). Both ports are in the same axial alignment, circular left and right, being Port 1 with direct reception and Port 2 with lateral reception, reducing the shadow area of the feeder in the antenna, allowing the assembly with filters against interference 5G.



The feeder assembly is universal and can be used in antennas with 3 or 4 rods. The polarizer can be configured at the factory to the port 1, direct reception, circular left and the port 2, side reception, circular right and vice versa.

Configuration "A"

Port 1: Circular Left
Port 2: Circular Right



Configuration "B"

Port 1: Circular Right
Port 2: Circular Left



Technical specifications	
Model	Apêndice B® - OV FABDC
Polarization	Circular – Dual
Frequency Range	4.5 – 4.8 GHz
RX Port	CPR 229F
F/D	0.30 to 0.40
VSWR	1.3:1 max
Axial Ratio	≤ 3.0 Typical
Insertion Loss	0.20 dB
Return Loss	17 dB
Assembly	For 3 or 4 rod antennas
Operating Temperature	-40°C to +60°C
Standard Color and Painting	White - Epoxy Painting * Ask us about the color options
Weight	1.80 Kg
Accessories	LNBS mounting Kit, Flange protection cover
NCM	8529.10.90



*Note: Specifications subject to change without notice.
Made in Brazil
Apêndice B® is a Trademark of Images Eletrônica Eireli.*

All Rights Reserved